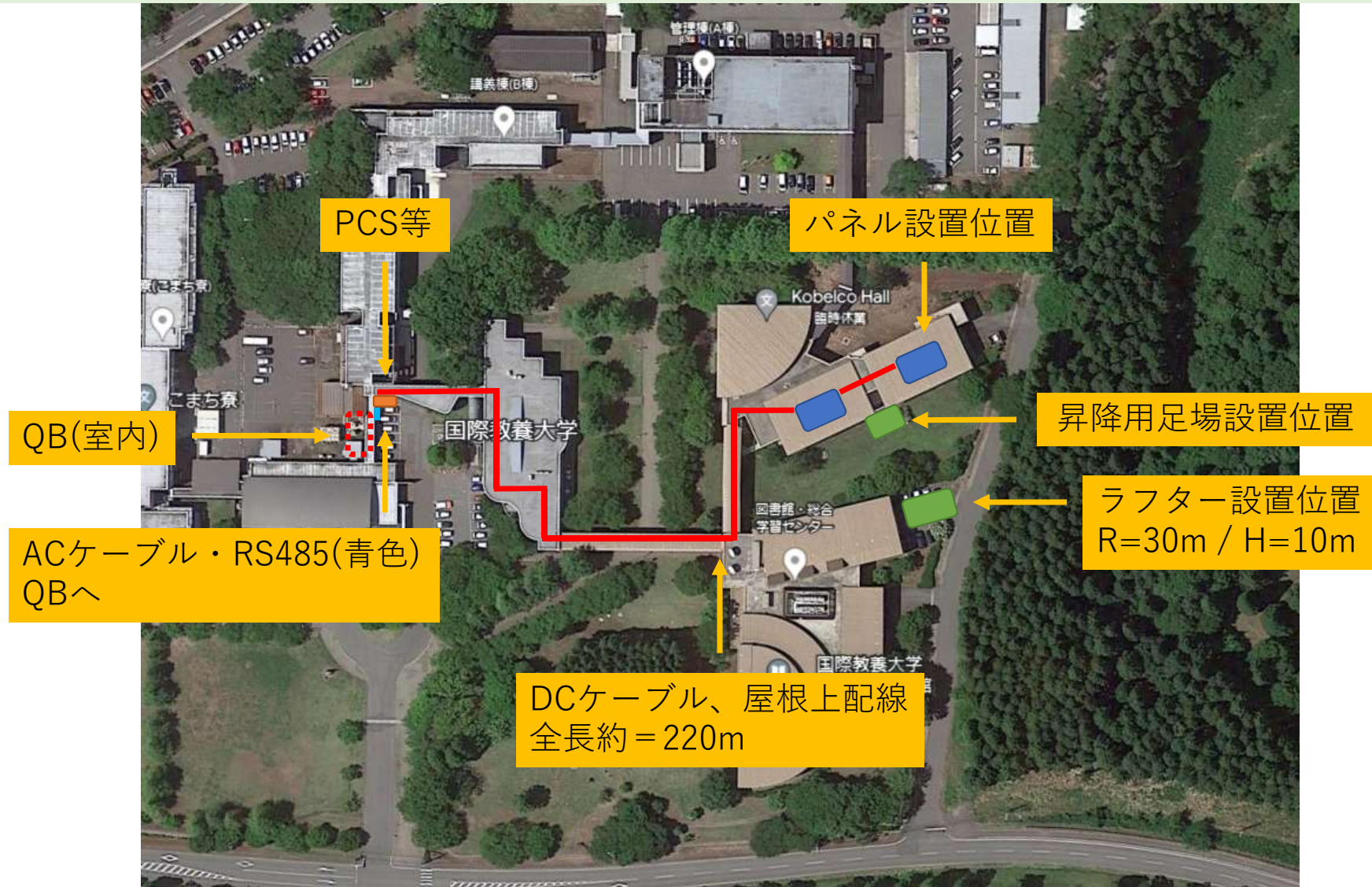
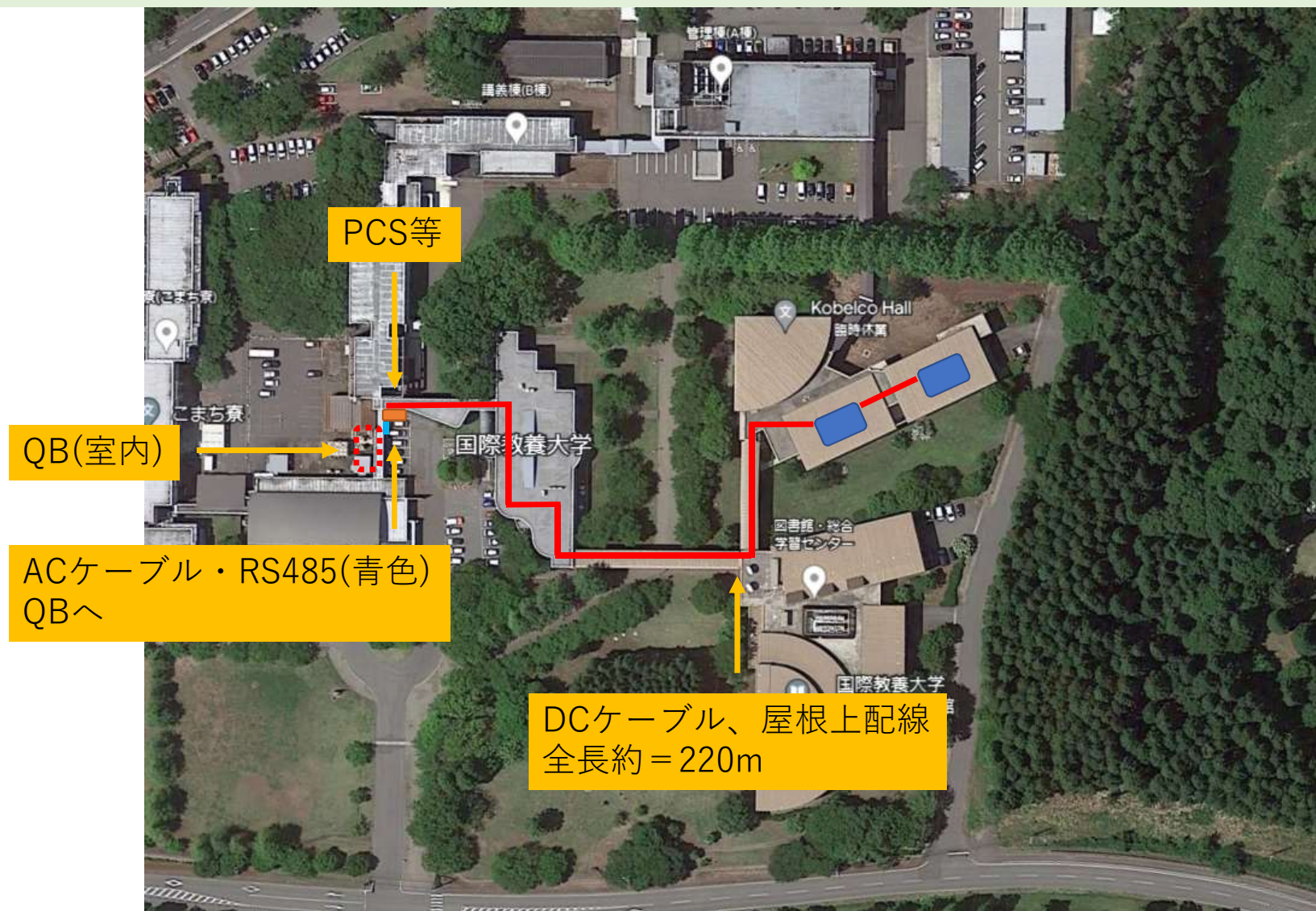


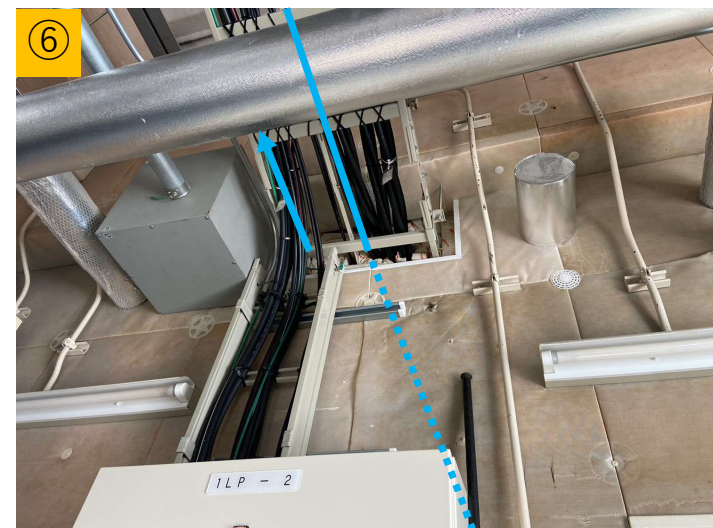
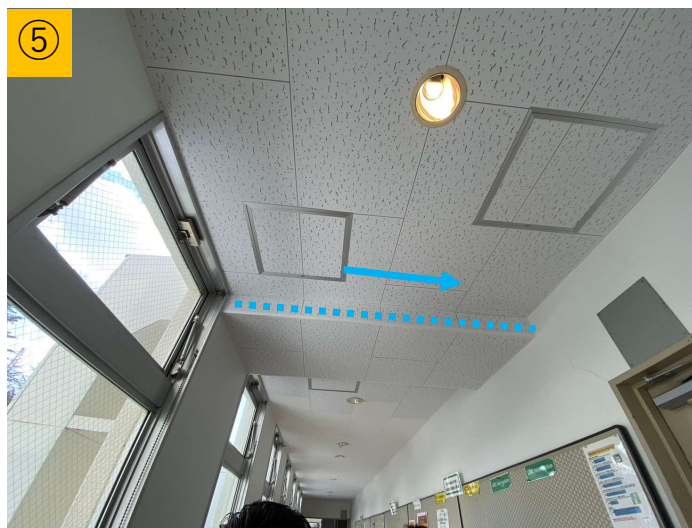
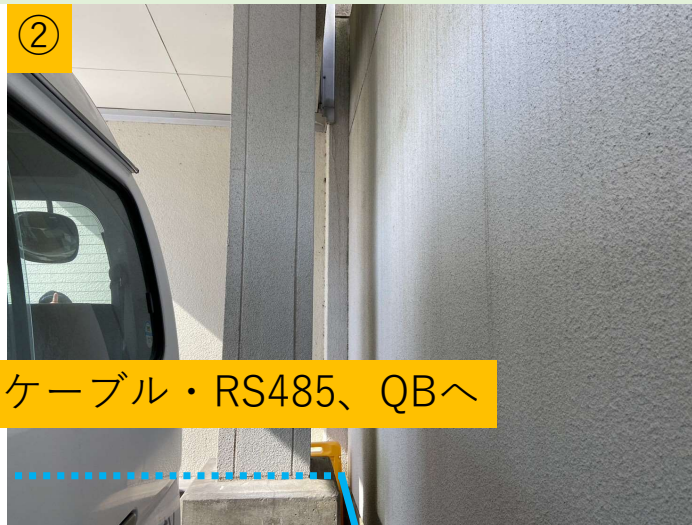
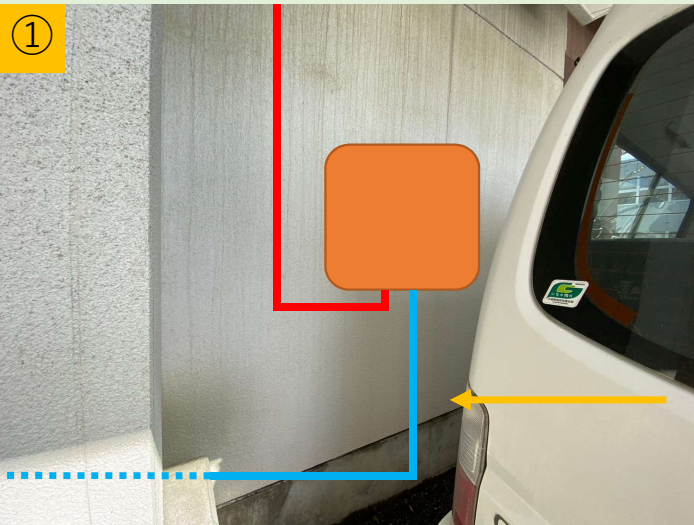
構内図_施工概要イメージ



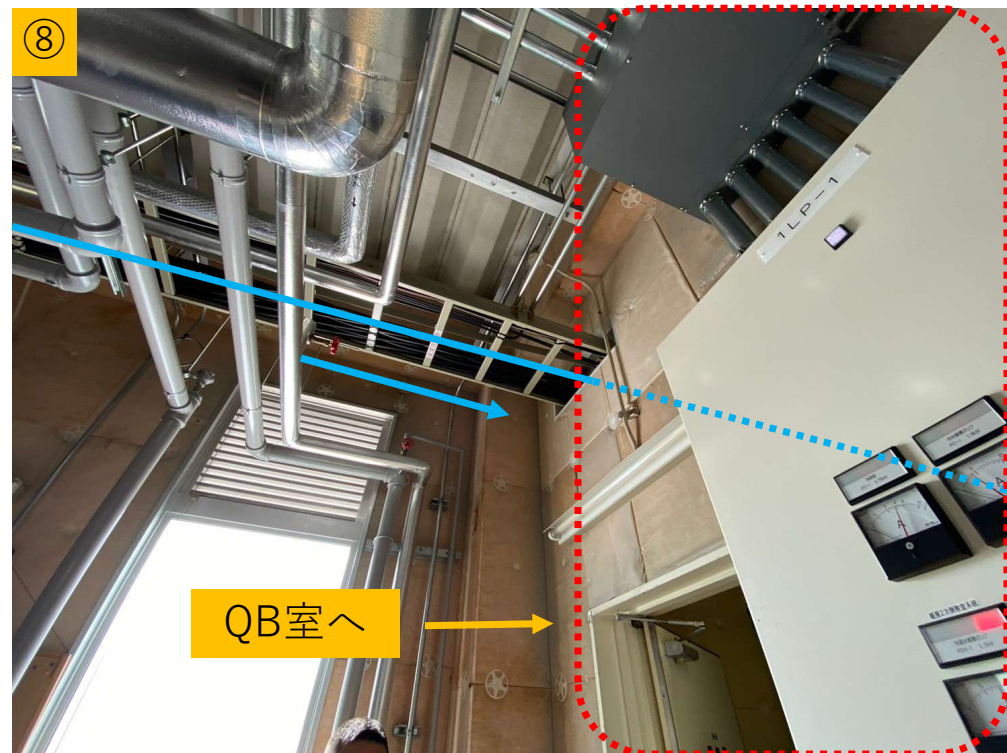
電気工事_配線ルート①



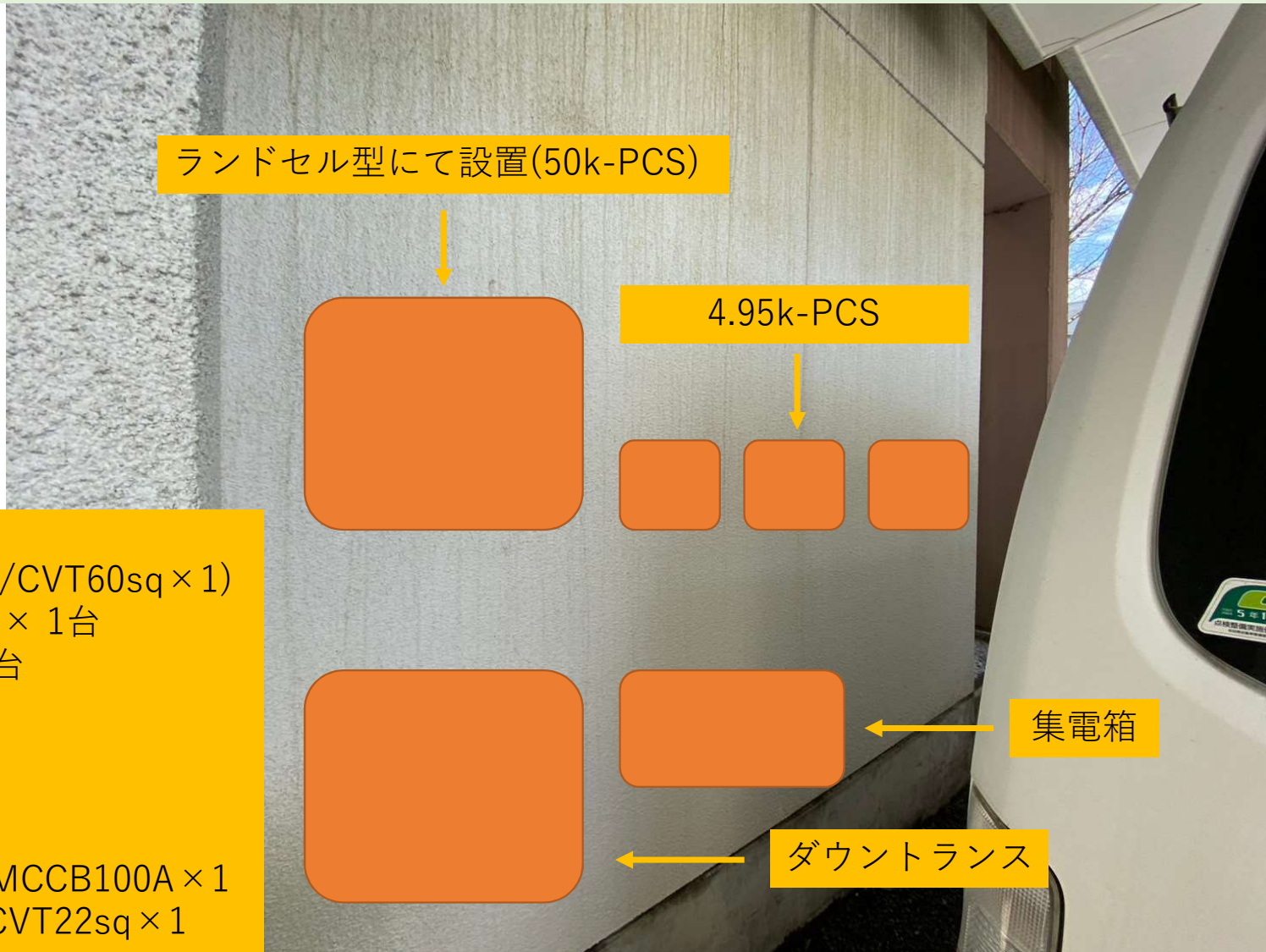
電気工事_配線ルート②



電気工事_配線ルート③



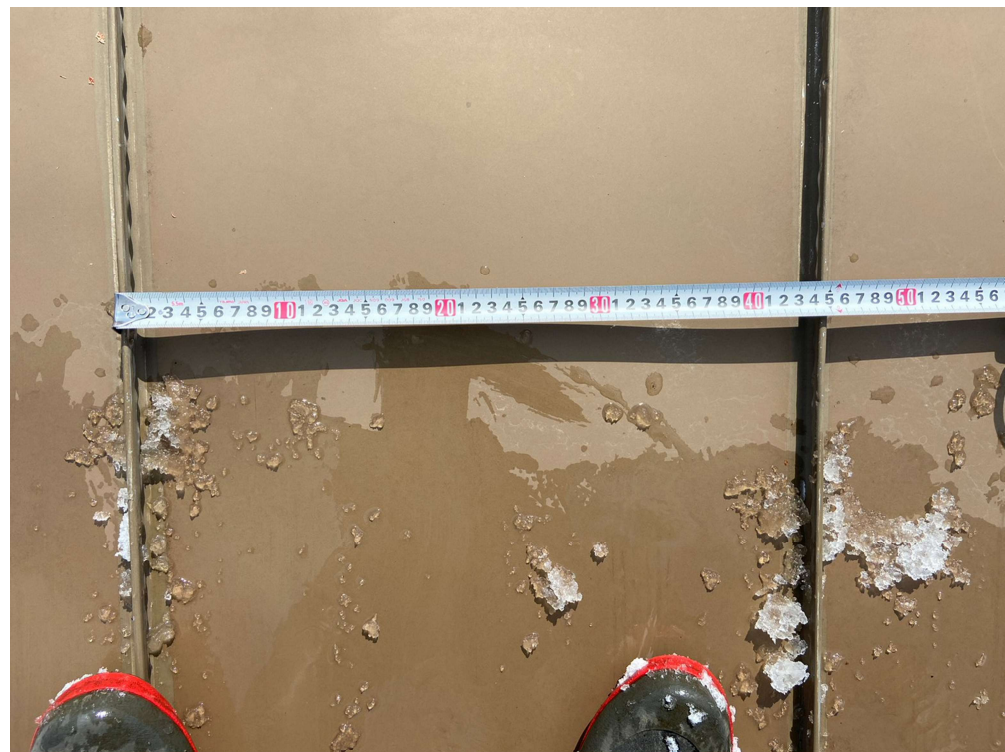
PCS_設置箇所 イメージ



屋根材_状況確認



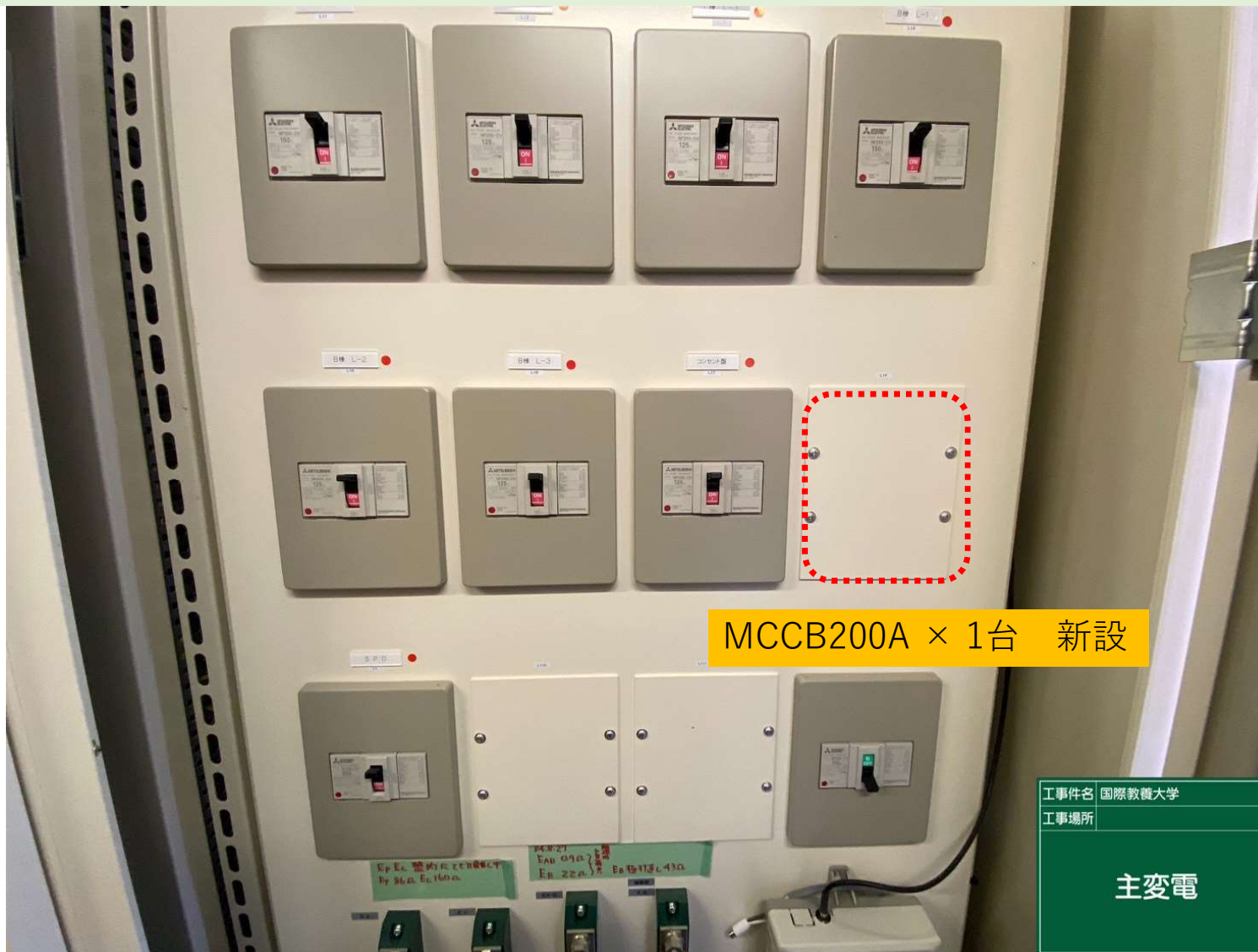
屋根材_寸法確認



1山 = 450mm/全57山

QB_改修内容①

動力盤



QB_改修内容②

電灯盤

MCCB100A × 1
新設



荷揚げ_ラフター位置



ラフター設置位置
R=30m / H=10m

昇降用足場_設置場所

